

NE CONNECTION

A PUBLICATION OF NORTHEAST OKLAHOMA ELECTRIC COOPERATIVE

YOU COULD WIN BIG!
THE HUNT FOR CASH: REC DAY 2020

REC DAY CHANGES
4 DRIVE-THRU LOCATIONS

NOEC BOARD
APPROVES PATRONAGE CAPITAL

SEPTEMBER 2020



Touchstone Energy® Cooperatives

Northeast Connection is published monthly to communicate with the members of Northeast Oklahoma Electric Cooperative.

OFFICERS & TRUSTEES

Dandy A. Risman - District 5, President
John L. Myers - District 4, Vice-President
Benny L. Seabourn - District 2, Secretary-Treasurer
Jimmy Caudill - District 9, Assistant Secretary-Treasurer
Charles A. Wyrick - District 1
Brian Kelly - District 3
Sharron Gay - District 6
James A. Wade - District 7
Bill R. Kimbrell - District 8

MANAGEMENT TEAM

Daniel Webster - General Manager/CEO
Shane Burgess - Engineering Design & Special Projects
Larry A. Cisneros, P.E. - Engineering
David Cusick - NRS-ROW
Ricky Hignite - Information Technology
Lindey Leforce - Member Services
Tim Mixson - Safety & Loss Control
Connie Porter - Financial Services
Nick Sutton - Operations

VINITA HEADQUARTERS

27039 South 4440 Road, Vinita, OK 74301

GROVE OFFICE

212 South Main, Grove, OK 74344

BUSINESS HOURS

Monday-Friday, 8 a.m. to 4:30 p.m.

Offices are closed Saturday, Sunday and holidays.

DISPATCHING AVAILABLE 24 HOURS AT

1.800.256.6405

If you experience an outage:

1. Check your switch or circuit breaker in the house and on the meter pole to be sure the trouble is not on your side of the service.
2. When contacting the cooperative to report an outage, use the name as it appears on your bill, and have both your pole number and account number ready.

Please direct all editorial inquiries to Public Relations at 800.256.6405 or email publicrelations@noec.coop

This institution is an equal opportunity provider and employer. If you wish to file a Civil Rights program complaint of discrimination, complete the USDA Program Discrimination Complaint Form, found on-line at www.ascr.usda.gov/complaint_filing_cust.html, or at any USDA office, or call 866.632.9992 to request the form. You may also write a letter containing all of the information requested in the form. Send your completed complaint form or letter to us by mail at U.S. Department of Agriculture, Director, Office of Adjudication, 1400 Independence Avenue, S.W., Washington, D.C. 20250-9410, by fax 202.690.7442 or email at program.intake@usda.gov.



NEW LOOK.
SAME GREAT TRADITION.

Sami Jo Frisby
Executive Administrator

Little did I know when I was a young girl attending REC Day that I would one day be planning the event. Growing up, I remember attending our cooperative annual meeting

every year when it was held at South Park in Vinita. Some things I remember about that day were the many prizes that were given away, standing in line for funnel cakes, and the huge tents.

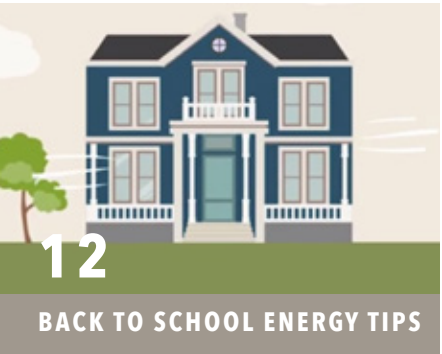
Planning the 82nd REC Day has been challenging with everything happening in our world. It is becoming increasingly clear that many of our old ways of doing business are changing.

Northeast Oklahoma Electric Cooperative wants to keep our members and employees safe during these trying times. After careful thought and planning, the decision was made to take the meeting to the members. On Saturday, September 19, we will be bringing REC Day to a town near you in a drive-thru format. The drive-thru format will allow members to register, vote, and receive a special member gift without ever leaving their vehicles.

Continued on page 3.



I found this picture while going through photos at our NOEC office. This is my mom and me in 1986 attending the 48th celebration of REC Day at South Park in Vinita.



\$100 IS HIDING!

Search the pages of NE Connection for a 6-digit account number with an asterisk on each side. For example: *XXXXXX*. Compare it to your account number, which appears on your monthly electric bill. If they match, contact the cooperative at 918.256.9332, by October 1, 2020, to claim a \$100 credit on your electric account.

Events are published as space allows and must be submitted at least 60 days in advance. Send information, including phone number for publication, to Northeast Connection Events Calendar, PO Box 948, Vinita 74301 or email to publicrelations@noec.coop

SEPTEMBER 2020 EVENTS

Outlaw Finals Race
Sep 5 | Jay
MidAmerica Outdoors
918.837.0079

Harvest Fest
Sep 10 | Spavinaw
14367 OK-82
918.782.2920

Camp Bandage Grand Lake
Sep 12 | Afton
Grand Lake RV Resort
918.782.2920

Nichols Marine Tournament Series
Sep 12-13 | Grove
Wolf Creek Park
918.786.6107

Pioneer Days
Sep 25-26 | Grove
Har-ber Village Museum
918.314.9566

ORRE Series Finals
Sep 25-27 | Jay
MidAmerica Outdoors
918.837.0079

September events are subject to date change or cancellation. Please contact the host for most current event information.

SAVE THE DATE

REC Day 2020
Sep 19 | Multiple Locations

Craig County
Vinita High School

Delaware County
Grove Middle School

Mayes County
Locust Grove Early Learning Center

Ottawa County
Miami High School

82ND REC DAY

DRIVE-THRU AT-A-GLANCE

Select any of the four sites to register. It does not have to be the one in your county or closest to your home or business. You will only be able to register once. Once you have registered, you will not be able to register again at a different location.

SITES

- **Craig County**
Vinita High School parking lot
- **Delaware County**
Grove Middle School parking lot
- **Mayes County**
Locust Grove Early Learning Center parking lot
- **Ottawa County**
Miami High School parking lot

Note: There will be one way in and one way out of every site. It is important to follow these routes to ensure your safety and keep traffic flowing in the right direction.

965660



REGISTRATION

8 a.m. - 12 noon

MEMBER GIFTS

Souvenir hat, wet/dry bag, lantern, stylus pen

PRIZES

- **\$10,000 cash (grand prize)**
- **\$5,000 cash**
- **\$3,000 cash**
- **\$2,000 cash**
- Nine (9) \$500 electric credit registration prize (one winner awarded in each cooperative district)
- BONUS \$500 cash registration prize (This is a bonus \$500 electric credit. Find the barcode in the your August bill and present this during registration.)

BUSINESS

Membership will be asked to approve proposed bylaw updates.

WATCH

Business meeting and prize drawings will air live at 3 p.m. on the coop website: www.noec.coop, and Facebook page: facebook.com/neokrec

NEW LOOK.

SAME GREAT TRADITION.

Continued from inside front cover.

We do have business for you to vote on. This year, the board is requesting a review of the bylaws. They found many of the procedures, requirements, and qualifications to be outdated. In fact, some aspects of the bylaws have never been updated.

We have four designated drive-thru options for you. You can choose any location. It does not have to be the one closest to your home or business. Locations are as follows:

- **Craig County - Vinita High School**
- **Delaware County - Grove Middle School**
- **Mayes County - Locust Grove Early Learning Center**
- **Ottawa County - Miami High School**

Registration will be open at each of these four sites from 8 a.m. until 12 noon.

Once you select a drive-thru location, please review the map of that location to find the route you need to take (page 4). There will be one way in and one way out of every site. It is important to follow these routes to ensure your safety and keep traffic flowing in the right direction.

We are continuing our tradition of great prizes. In these uncommon times, the board decided a little extra cash would be just the thing to draw members to annual meeting. Members who register qualify for multiple cash prize drawings. The grand prize is \$10,000; followed by a \$5,000 second prize; a \$3,000 third prize; and a \$2,000 fourth prize. We will also be giving away our usual \$500 electric credits—one for each of the nine districts.

Want another chance to win a prize? Located in your August bill, you will find a barcode with your name and information. Bring this with you when you register. It will help speed up the process of registration. As a “thank you” you will be entered into another drawing to win a \$500 electric credit. Each member will only be able to register once. Once you have registered, you will not be able to register again at a different location.

At 3 p.m., we will conduct the business portion of our annual meeting. It will be broadcast live for our membership to watch. There will be a link on our website and Facebook page. Click on this link and watch the business meeting take place. Following the meeting, we will draw the winners of the prizes. You won’t want to miss it.

Our employees are working hard to plan and create a fun and memorable day for our members. The opportunity to attend and participate in our annual meeting is one of the many benefits of being an NOEC member. I hope you will consider joining us as we celebrate our 82nd year.



82ND ANNUAL MEETING MAPS

SEPTEMBER 19, 2020 | 4 LOCATIONS

MEETING SCHEDULE:

8AM - 12 NOON

- Drive-Thru Registration
- 4 Convenient Locations

3PM

- Annual Meeting live broadcast:
facebook.com/neokrec or www.noec.coop

- Miami High School
- Vinita High School
- Grove Middle School
- Locust Grove Early Learning Center

IMPORTANT: Registration is open from 8 a.m. to 12 noon at each drive-thru site. Each member is eligible to register at ONE drive-thru site only.

Prize winners will be announced later in the day during the live broadcast.



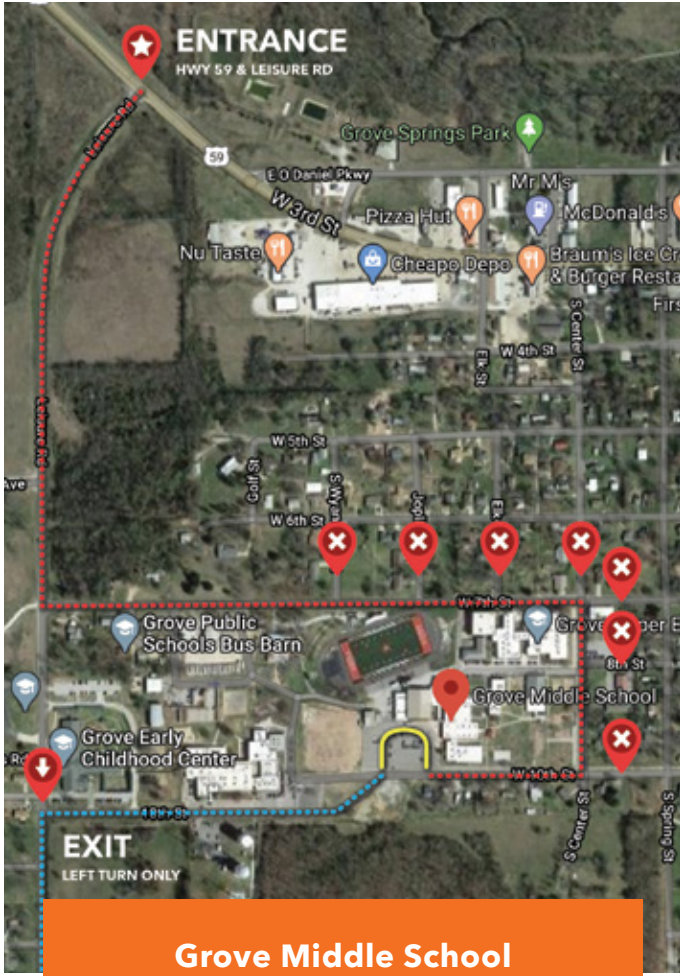
Miami High School
2000 E Central Ave, Miami, OK

Miami High School directions: Enter site by turning onto Deacon Turner Road from Steve Owens Boulevard (Highway 10). Continue until you reach the Miami High School parking lot.



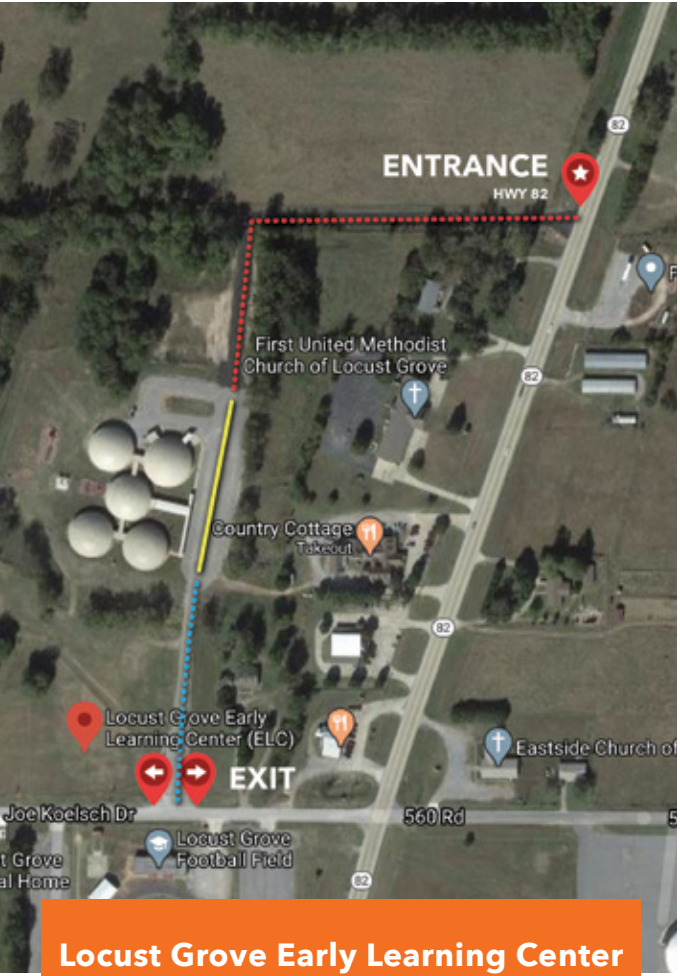
Vinita High School
801 N Adair St, Vinita, OK

Vinita High School directions: Enter site by turning into the Vinita High School driveway that runs in front of the school off of West Hope Avenue.



Grove Middle School
517 W 10th St, Grove, OK

Grove Middle School directions: Enter site by turning onto West 7th Street from Leisure Road. Take a right on South Center Street, a right on West 10th Street, and another right into the school parking lot.



Locust Grove Early Learning Center
483 Joe Koelsch Dr, Locust Grove, OK

Locust Grove Early Learning Center directions: Enter site by turning west off of Highway 82 into the designated Early Learning Center entrance (located across the highway from Froman Propane and just north of First United Methodist Church). Follow this driveway as it turns south into the school parking lot.

MAP KEY

Entry

No Entry

Exit

Entry Path

Exit Path

Drive-Thru

ANNUAL MEETING MINUTES

SEPTEMBER 21, 2019

The 81st annual meeting of the members of Northeast Oklahoma Electric Cooperative, Inc. (hereinafter “Cooperative”), was held in the Civic Center, at Grove, Oklahoma, Saturday, September 21, 2019.

President Dandy Risman called the meeting to order at 12:17 p.m. and announced that a quorum of members, 1703, had registered. Lindey Leforce delivered an invocation, immediately followed by a flag salute led by Boy Scout Troop 78. Mr. Risman continued by reading the official meeting notice and stating the notice was published in the September issue of the Northeast Connection (NE Connection). Also included in the NE Connection were the minutes of the 2017 Annual Meeting, 2017 Adjourned Annual Meeting, 2018 Annual Meeting, and the Treasurer’s Report. President Risman asked if any member requested that the 2017 or 2018 minutes be read. No member requested such reading and the reading was omitted. There were no corrections to 2017 or 2018 meeting minutes and the minutes stood approved as written.

Mr. Risman introduced the Board of Trustees, their spouses and the new general manager Daniel Webster. Mr. Webster recognized Cooperative employees and retirees, recognized active military and veterans.

Before announcing the election results, Mr. Torrone introduced the Operation Round-up board, noting they served as the Credentials and Election Committee.

THE ELECTION RESULTS WERE AS FOLLOWS

Election Results, Out of 1,530 ballots cast:

District 7: James Wade - 1,357

District 9: Jimmy Caudill - 1,355

Mr. Webster oversaw the prize drawings.

Not seeing any unfinished or new business, Mr. Torrone asked for a motion to adjourn the business meeting. A motion was made by Maggie Hayworth and seconded by Loretta Brown. The motion carried and the meeting adjourned at 12:35 p.m.

Hereby certified as true and accurate minutes of the September 21, 2019, annual meeting of the membership.

NOTICE

REQUIREMENT TO REGISTER AT ANNUAL MEETING:

In accordance with Article I of Northeast Oklahoma Electric Cooperative, Inc.’s bylaws, only eligible members may register and cast a ballot at annual meeting. In order to register and vote you **MUST** be one of the following:

- Primary on an individual account
- Primary or secondary on a joint account
- Named representative of a business or organization (present a letter from the governing body of the entity stating you are the representative for that entity)

If you are not listed on the account, regardless of marital status, you will **NOT** be able to register and vote. We strongly encourage you to check your account. It is simple to add a person to make a joint account. Call member services at 918.256.6405.

CONSOLIDATED FINANCIALS 2019-2018



NORTHEAST OKLAHOMA ELECTRIC COOPERATIVE

Northeast Oklahoma Electric Cooperative is pleased to report another financially successful year. Patronage capital (margins) totaled \$2,475,340 for 2019 and the co-op is in compliance with the guidelines set forth by its lenders.

Net utility plant increased 1.6 percent during 2019 and kWh sales increased 2 percent over 2018. The certified public accounting firm of BBG, LLP, prepared this year’s audit.

Statements are available for review at NOEC’s headquarters in Vinita.

	2019	2018
OPERATING REVENUE	\$77,406,699	\$80,164,464
EXPENSES		
Purchased Power	43,506,260	45,394,691
Transmission Expense	0	4,341
Distribution Expense - Operation	2,206,649	2,618,403
Distrib. Expense - Maintenance	6,024,349	5,709,107
Consumer Accounts Expense	2,580,437	2,831,978
Customer Service Expense	1,158,512	987,025
Sales Expense	85,419	121,880
Admin. and General Expense	4,008,904	3,658,745
Depreciation Expense	7,861,716	7,739,406
Tax Expense - Property	1,523,165	1,557,854
Tax Expense - Other	95,655	120,816
Interest on Long-Term Debt	4,172,705	4,187,639
Interest Expense - Other	43,469	352,497
Other Deductions	35,724	5,880
COST OF ELECTRIC SERVICE	73,302,964	75,290,262
Operating Patronage Capital	4,103,735	4,874,202
Non Operating Margins - Interest	647,896	513,394
Income (Loss) from Equity Invest.	(4,271,162)	(3,416,674)
Non Operating Margins - Other	1,315,473	(315,731)
Gener. & Transm. Capital Credits	194,012	153,710
Other Capital Credits	485,286	686,223
TOTAL PATRONAGE CAPITAL	\$2,475,240	\$2,495,124

ASSETS & OTHER DEBTS	2019	2018
Total Utility Plant in Service	\$229,009,530	\$223,355,138
Construction Work in Progress	4,139,630	2,214,343
Total Utility Plant	233,149,160	225,569,481
Acc. Prov. for Depreciation	(80,977,081)	(75,790,676)
NET UTILITY PLANT	152,172,079	149,778,805
Investment in Subsidiary Compa.	18,960,693	19,753,579
Invest. Assc. Patronage Capital	6,179,662	5,851,003
Invest. Assc. Other - General Fun.	2,500	2,500
Invest. Assc. Other - NonGen Fu.	1,552,948	1,556,778
Other Investments/Special Funds	12,447,477	8,003,295
TOTAL OTHER PROPERTY & INVESTMENTS	39,143,280	35,167,155
Cash-General Funds	1,778,244	1,424,443
Special Deposits	8,285	8,285
Temporary Investments	2,973,472	2,426,311
Cash - Construction Funds	441,194	7,806,761
Accounts Receivable	7,670,351	8,322,400
Accounts Receivable - Other	11,549,678	9,931,897
Materials & Supplies	783,789	840,436
Prepayments	104,010	65,649
Other Current & Accrued Assets	16,259	16,260
TOTAL CUR. & ACC. ASSETS	25,325,282	30,842,442
Deferred Debts	2,475,248	3,200,955
TOTAL ASSETS & OTHER DR	\$219,115,889	\$218,989,357
LIABILITIES & OTHER CREDITS		
Patronage Capital	85,211,500	76,429,540
Operating Margins - Prior Years	0	3,211,574
Operating Margins - Current Year	547,595	2,303,340
Non-Operating Margins	1,927,645	(3,019,790)
Other Margins & Equities	(3,443,100)	3,894,873
TOTAL MARGINS & EQUITIES	84,243,640	82,819,537
Long-Term Debt CFC	5,259,006	5,799,331
Long-Term Debt - Other	91,511,213	96,205,028
TOTAL LONG-TERM DEBT	96,770,219	102,004,359
Other Noncurrent Liabilities	17,614,727	16,684,014
Notes Payable	0	0
Accounts Payable	4,874,578	5,406,622
Consumers Deposits	1,664,609	1,654,832
Curr. Maturities Long-Term Debt	5,071,784	4,741,005
Other Curr. & Accrued Liabilities	3,404,652	3,271,770
TOTAL CUR. & ACC. LIAB.	32,630,350	31,758,243
Deferred Credits	5,471,680	2,407,218
TOTAL LIAB. & OTHER CR	\$219,115,889	\$218,989,357

NOEC BOARD

APPROVES 2019 PATRONAGE ALLOCATION

Cooperative businesses are unique. They are owned by the members they serve and are guided by a set of seven principles that reflect the interests of those members. One of those seven guiding principles is Member Economic Participation.

Economic participation simply means that members contribute equitably to—and democratically control—the capital of the cooperative. Unlike investor-owned utilities, cooperatives do not issue stocks. Surpluses are *margins*, not profits.

Margins exceeding what is required to operate are allocated to member patronage accounts. The success of a cooperative is shared with its members through annual patronage allocation.

Northeast Oklahoma Electric Cooperative's board of trustees recently approved allocation of 2019 patronage capital totaling \$7,783,033.

For 2019 usage, an allocation factor of \$.01173 per kilowatt-hour (kWh) will be used. A member using 1,402 kWh per month, for example, would produce \$197.35 in patronage.

To calculate the capital credit allocated to your member patronage account for 2019, simply multiply the allocation factor of \$.01173 by your total kWh of usage for the year.

If you are a member of the cooperative with active service, you can find the allocation amount in the upper right-hand corner of your August 2020 statement. This amount will remain in your patronage capital account until a future patronage retirement is made.

The cooperative is honored to serve and share its success with its members. If you have questions about how capital credit is allocated or if you would like to know the total amount in your member patronage account for this or previous years, feel free to contact us at 800.256.6405.



NO DISTRICT MEETINGS FOR 2020

Incumbent trustees Charlie Wyrick (District 1), Brian Kelly (District 3) and Dandy Risman (District 5) were set to host district meetings on July 20, 21, and 23, respectively. However, with no challengers to contest these district seats—and prompted by concerns surrounding COVID-19—the cooperative made the decision to cancel the three meetings.

“With Notice of Candidacy being filed by only the incumbent trustees during the designated July 6-10 filing period, it made the most sense for us to cancel the meetings,” explained NOEC General Manager Daniel Webster. “Under the circumstances, we felt it was better for us to err on the side of caution and avoid any unnecessary exposure risk for cooperative members and employees.”



Charles A. Wyrick
District 1

Elected to the Northeast Oklahoma Electric Cooperative

board of trustees in September 2017, Charles Wyrick represents members who reside in District 1, which covers most of Ottawa County. Wyrick graduated as co-valedictorian of Fairland High School followed by attendance at Northeastern Oklahoma A&M College in Miami. His diverse professional background includes operating a dairy, heavy equipment contracting, beef and dairy cattle leasing, dock construction and repair, and 12 years in the Oklahoma State Senate. He and wife Pamela have two married sons and four grandchildren.



Brian Kelly
District 3

Joining the Northeast Oklahoma Electric Cooperative board of

trustees in September of 2018, Brian Kelly represents District 3 members residing in the Welch, Centralia, and Bluejacket areas. Kelly is an agent with the Oklahoma Farm Bureau and operates a cow/calf ranging operation in Oklahoma and Kansas. He graduated with a bachelor's in business administration from Oklahoma State University. He is an active member of the Oklahoma Cattlemen's Association, the Craig and Ottawa County Cattlemen's Association, and the National Cattlemen's Association. He is an active supporter of local FFA and youth sports programs. Kelly is married to Jacie with whom he has four children: Landen, Erika, Rachel, and Wil.



Dandy A. Risman
District 5

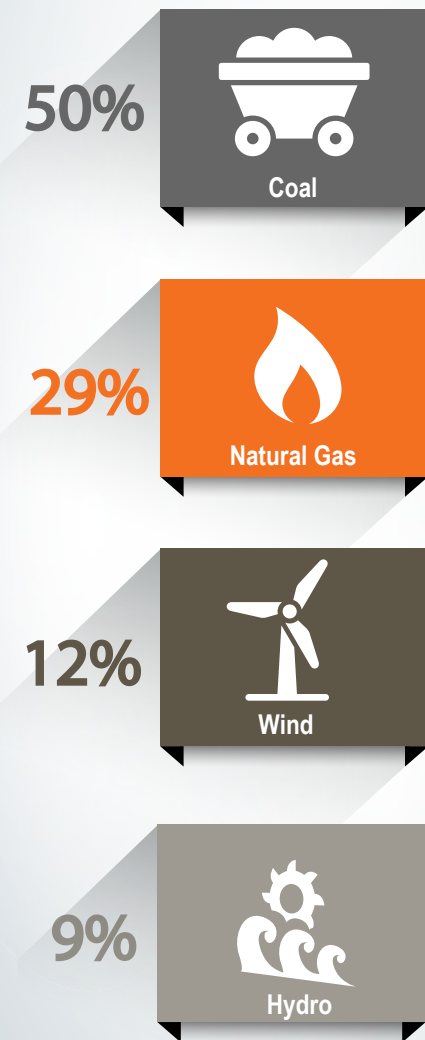
Representing District 5 on the Northeast Oklahoma Electric

Cooperative board of trustees since September 2008, Dandy Risman's district includes members residing in Ketchum, Langley, Disney, and Spavinaw. Risman was elected by his peers to serve as president of the NOEC board of trustees in September 2009. Licensed by the Oklahoma Board of Medical Licensure as a respiratory care practitioner, Risman is a respiratory therapist by trade. He obtained a degree in respiratory therapy from Tulsa Community College following graduation from Ketchum High School. Risman is the owner of several businesses in the South Grand Lake area. He is a member of the Grand Lake Chamber of Commerce, the Ketchum Public School Board and the Grand Lake Lions Club. He enjoys golf, boating and travel. Risman and wife Joyce have two children, a son and daughter.

A MIX OF GENERATION

MEANS RELIABLE POWER

2019 AECl Generation Resources



WE ARE
Member-Owned,
Member-Focused.

For most things in life, balance is healthy. The same is true of the power generation mix that delivers electricity to your home, farm, or business. Balance is a key part of the reliability Associated Electric Cooperative (AECI) works hard every day to achieve. AECI is the upstream power generation and transmission supplier for northeast Oklahoma’s electric cooperatives, including KAMO Power and Northeast Oklahoma Electric Cooperative.

Associated’s balanced generation mix – featuring different fuels and ways to generate electricity – ensures lights come on when you flip that switch. Coal, natural gas, wind, and hydropower generation means flexibility to meet member needs. This mix lets Associated focus on reliability, along with providing electricity that is affordable.

By using coal and natural gas units, members receive electricity reliably from generators designed to run around the clock. These plants can increase or decrease their power output to serve members when they need electricity.

“Keep the turbine turning so we can keep the lights burning.”

Associated’s maintenance programs ensure these generators are efficient and available when they’re most needed. If one unit stops operating, others make up the difference.

Joe Bader, an Ozark Border Electric Cooperative member, is one of many Associated employees tasked with keeping plants running. Joe is a journeyman machinist/mechanic at the New Madrid Power Plant. He works on equipment that supports power production, including turbines. His motto? “Keep the turbine turning so we can keep the lights burning.”



Choteau Power Plant - Natural Gas

“As both an employee and member of the cooperative, I can appreciate the diversity, balance, and reliability that is achieved when my power supplier doesn’t put all of its eggs in one basket. The wind doesn’t always blow and the rain doesn’t always fall. I also appreciate that KAMO and AECI have a vision that addresses both the push for cleaner air throughout our country and the need to keep costs down and power affordable.”

Lindey Leforce
Manager Of Member Services
Northeast Oklahoma Electric Cooperative

Joe says being a co-op member drives him to serve diligently. He knows families like his depend on his work for the electricity that powers their lives.

“That inspires me to do the best I can,” Joe says. “No one likes to be without electricity for even a minute. My job is to ensure every piece functions so these power plants stay on line.”

Why members benefit from a diverse supply

Wind and hydropower also are important parts of Associated’s generation mix. They produce electricity when wind and water are plentiful enough to make turbines spin. Generation from renewable sources, like solar, don’t always match peak use times – early in the morning on a winter day or late in the day during the summertime. This mismatch is why having a diverse power supply, with a foundation of around-the-clock resources like coal and gas, is important.

It’s a balance

A balance of generation sources means the lights will keep burning for members throughout Associated’s system. More than 700 employees like Joe work for Associated at its power plants and headquarters in Springfield, Missouri. Each is a critical part of the power supply picture, and each is devoted to ensuring you have affordable, reliable electricity when you need it.

In next month’s issue: Affordable electricity is important to all members. We’ll explore energy affordability and how Associated works to keep costs low.

Bluegrass Ridge Wind Farm - Wind



Our Local History

Northeast Oklahoma Electric Cooperative has been a member of the KAMO/AECI family since 1951. However, prior to June 1, 2017, the cooperative purchased only a small percentage of its required annual power from KAMO. Effective June 1, 2017, KAMO began serving 100% of the NOEC load from a total of 34 delivery points, including two delivery points already served by KAMO.

As part of the transition, KAMO agreed to purchase 21 NOEC substations and approximately 100 miles of cooperative-held 69kV transmission lines. This removed from NOEC the burden of having to test, maintain and replace any components, including transformers in the substations, and perform maintenance on these transmission lines.

The addition of the NOEC load, with its more than 38,000 active meters, added approximately 150MW to the KAMO system during peak demand. The partnership between KAMO Power, AECI and five other generation & transmission members of AECI creates a strong network of high voltage generation & transmission resources, communication systems, qualified personnel, planning, effective system operations, maintenance programs, and an economic and reliable power supply throughout Missouri, northeast Oklahoma and southern Iowa for the benefit of its member distribution cooperatives and their member-owners.

“Even when we were buying on a smaller scale from KAMO, they still treated us the same and gave us the same voice at the table when it came to making decisions. They’ve always been good to us and treated us fairly.”

Jim Wade
NOEC District #7 trustee

SAVE ENERGY

BACK TO SCHOOL TIPS

Summer is almost over, and while your kids might not be ready for school to start again, you can be excited about the new energy-saving opportunities that the back-to-school season brings. Whether attending school in-person or learning from home observe these energy saving tips:

- If you prepare your kid's lunches in the morning, or if they do it themselves, you may be opening and closing your fridge door frequently throughout the process. This makes your fridge work extra hard to keep a consistent temperature. To save energy, take out all your ingredients and supplies at once and set them on the counter. This makes your lunch easier to access, quicker to pack, and will keep you from wasting energy through your fridge door.
- Back-to-school season may be a time when you're investing in new electronic devices like laptops, printers, and mini-fridges. When shopping for new electronics, look for EnergySTAR labels. These products are certified as high-efficiency and low-energy devices, and many use up to 65% less energy than their non-certified counterparts.
- With the kids away at school, you will suddenly have fewer warm bodies in the house raising the temperature. There's no need to blast the air conditioner like you would in the summer, even if it's still hot out. Go ahead and turn up your thermostat a few degrees, and keep in mind that you can save 4 - 8% on your cooling costs for each degree you raise it. You can also reverse this pattern as the weather gets cooler.



BACK TO SCHOOL ENERGY SAFETY

- Never throw shoes onto power lines, and definitely don't try to get them off of the lines.
- Writing utensils and other supplies like paperclips should never be placed in or near electrical outlets, even if you think the outlet isn't working.
- Make sure your hands and the area around you are dry before plugging something in. This is especially important in science labs where there are usually several sets of sinks, an eye wash, chemicals, etc.
- When unplugging things from an electrical outlet, always hold the plastic base to pull the plug out. Never yank it out by the cord.

NOEC MEMBERS ASKED TO REVIEW BYLAW UPDATES

This year, the Northeast Oklahoma Electric Cooperative Board of Trustees is sponsoring an update to the organizational bylaws. The NOEC bylaws have not been modernized in several years.

A separate publication was mailed to all members with proposed bylaw language. Be on the lookout for this publication in your mailbox. It also includes the official notice of annual meeting.

Please take time to review the proposed bylaws. As you review them, you will notice updates designed to improve participation opportunities for members. Other bylaw updates ensure sound business practices.

One new feature of the proposed bylaws is a listing of defined terms. These are helpful in reading and understanding the bylaws. Updates were made to both annual and regular member meetings, including an option to use mail-in ballots.

Another new feature of the proposed bylaws is the ability for the board to take action through a process called "written consent." This will improve the efficiency of the board, particularly if we were to ever face another pandemic.

Preparing the proposed bylaws was a considerable team effort involving staff from all areas of the cooperative. Compliance with all applicable laws and regulations was thoughtfully addressed as the team worked together to provide updated language for the membership. The board and staff hope you agree that the proposed bylaws were drafted to provide for the betterment of the NOEC membership and that you will vote for their approval.



WANT TO LEARN MORE ABOUT YOUR MEMBERSHIP?
Please visit www.noec.coop.



FEATURE RECIPE

SEPTEMBER IS NATIONAL CHICKEN MONTH



Is my oil hot enough?

The easiest and safest method is to stick the end of a wooden spoon into the oil. If you see many bubbles form around the wood and they start to float up, your oil is ready for frying. If it is bubbling hard, the oil is too hot; let it cool a bit and check the temperature again.

CRISPY FRIED CHICKEN

COMFORT FOOD

INGREDIENTS

- **1 (4lb) whole chicken**
- **1 C milk or buttermilk**
- **2 C flour**
- **1 tsp paprika**
- **Salt and pepper to taste**
- **2 qt oil for frying**

Take your cut up chicken pieces and skin them if you prefer. Put the flour in a large plastic bag (let the amount of chicken you are cooking dictate the amount of flour you use). Season the flour with paprika, salt, and pepper to taste (paprika helps to brown the chicken).

Dip chicken pieces in milk or buttermilk, then, a few at a time, put them in the bag with the flour, seal the bag and shake to coat well. Place the coated chicken on a cookie sheet or tray, and cover with a clean dish towel or waxed paper. **Let sit until the flour is of a paste-like consistency. This is crucial!**

Fill a large skillet (cast iron is best) about 1/3 to 1/2 full with vegetable oil. Heat until very hot. Put in as many chicken pieces as the skillet can hold. Brown the chicken in hot oil on both sides. When browned, reduce heat and cover skillet; let cook for 30 minutes (the chicken will be cooked through but not crispy). Remove cover, raise heat again and continue to fry until crispy.

Drain the fried chicken on paper towels. Depending on how much chicken you have, you may have to fry in a few shifts. Keep the finished chicken in a slightly warm oven while preparing the rest.

Enjoy!

Want to submit a recipe to us?
Email details to publicrelations@noec.coop.